

**M3M**  
**ANTALYA**  
**HILLS**  
A TRIBUTE TO NATURE

SECTOR 79, GURUGRAM



# CONTENT

INTRODUCTION

---

ABOUT ANTALYA HILLS

---

PROJECT FEATURES

---

OUR PRODUCT

---



**WHAT !F** YOU COULD  
LIVE A BETTER  
EVERYDAY LIFE THAN  
REST OF THE PEOPLE?



**WHAT !F** YOU COULD  
BREATHE FRESH AIR AND  
HAVE THE COMFORTS OF  
PEACE AND SERENITY?



**WHAT !F** YOU COULD  
SAY GOODBYE TO THE  
STRESSFULL LIFE AND SAY  
HELLO TO SOULFUL  
LIVING IN THE HILLS?



**WHAT !F** YOU COULD  
WAKE UP TO THE  
EVERLASTING VIEW OF  
HILLS EVERY MORNING?



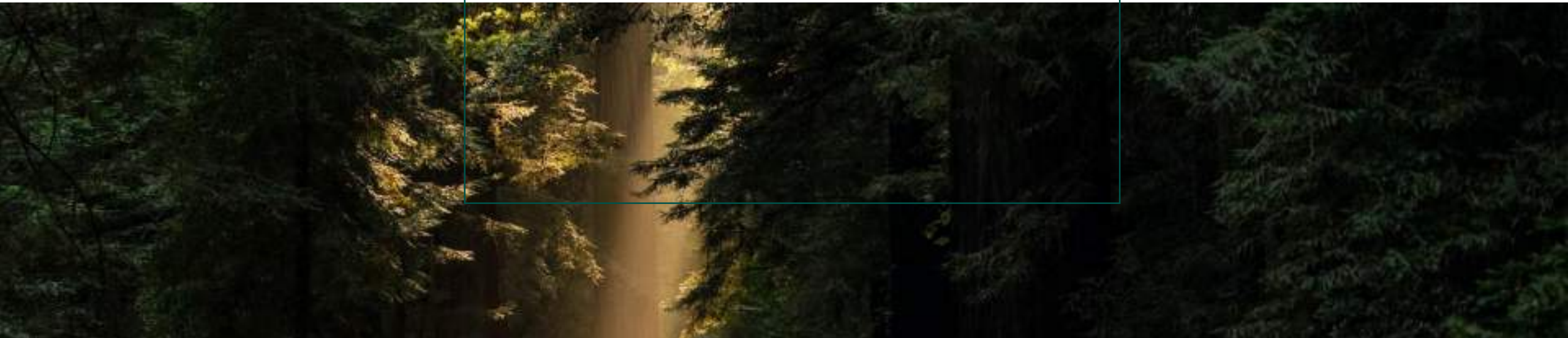
**WHAT !F** ALL YOUR  
DESIRES OF LIVING NEAR  
HILLS COME TRUE  
WITHOUT HAVING TO  
LEAVE THE BENEFITS OF  
CITY LIFE?







WHERE CAN YOU TURN  
ALL YOUR **WHAT !Fs**  
INTO REALITY?







**M3M**

ANTALYA  
HILLS  
A TRIBUTE TO NATURE

TURN YOUR WHAT IFs INTO REALITY

- Ecosystem for fulfilling all your desires
- Perks of city life along with the desire of being close to nature
- Sustainable, technology driven, future ready, nature first ecosystem









COME HOME TO A GRAND SENSE OF ARRIVAL





WAKE-UP TO THE EVERLASTING VIEW OF THE ARAVALI HILLS, EVERYDAY!





WALKING TRACK | KID'S PLAY AREA | COMMUNITY GARDEN





MOVE UP YOUR LIFE AT WELL-APPOINTED CLUBS

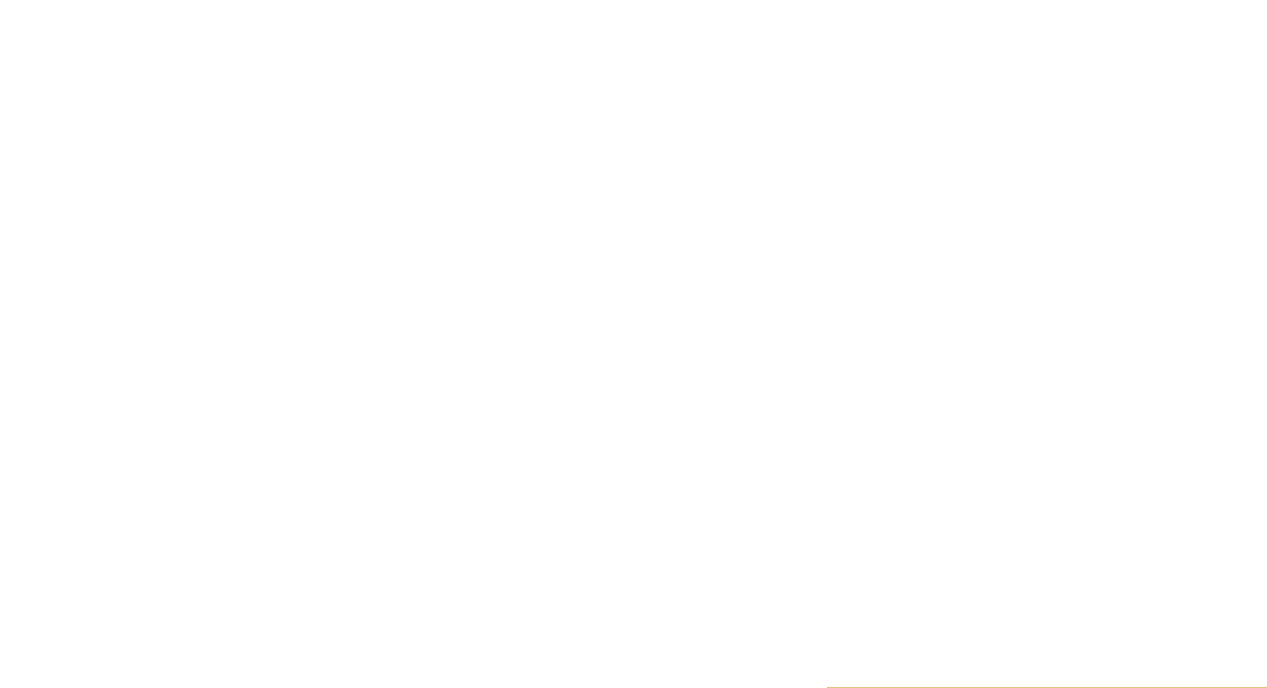




MULTIPLE SPORTS AMENITIES







LUSH LANDSCAPE & SERENE WATER BODIES







SPACIOUS LIVING SPACES

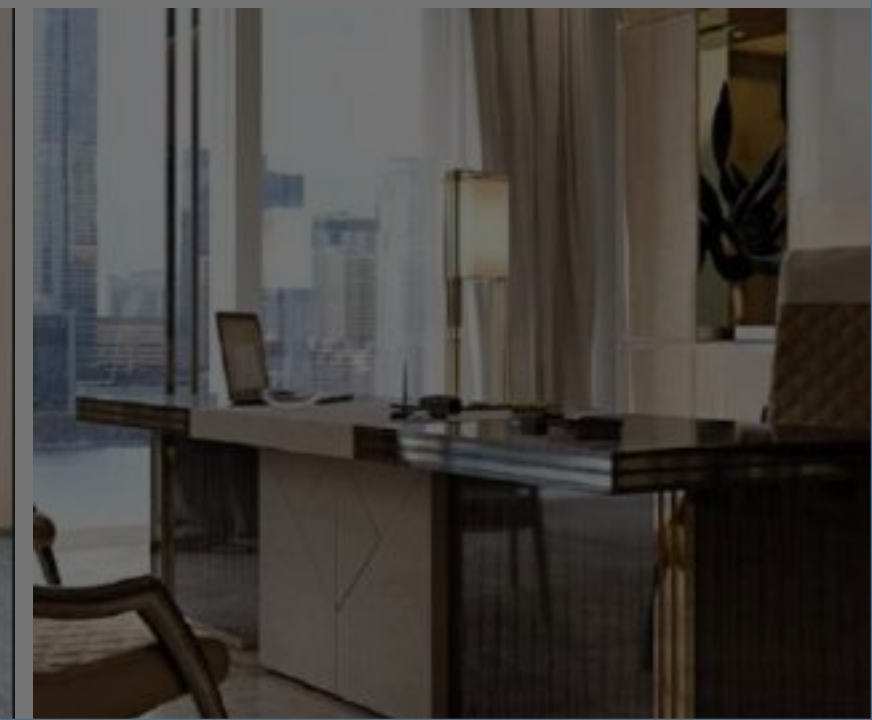
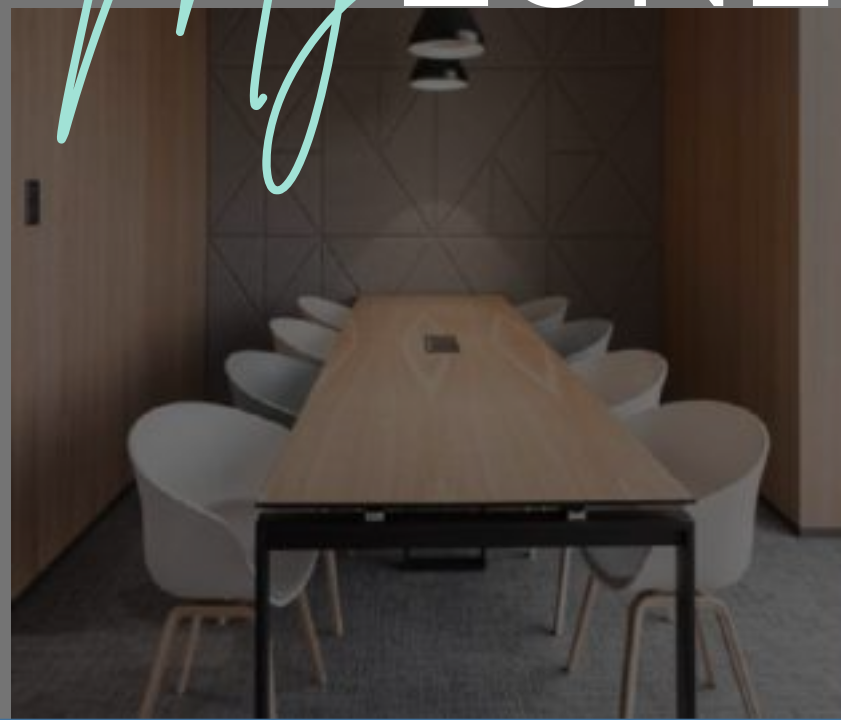






YOUR PERSONAL ZONE IN THE BASEMENT

My ZONE







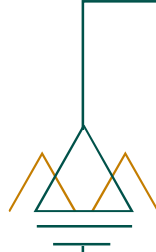
OWN A SLICE OF HEAVEN



*My* AER-LOUNGE



# PROJECT FEATURES





An aerial photograph of a city highway interchange. The highway has multiple lanes and a curved overpass. The surrounding area is a mix of green trees and urban buildings. A semi-transparent orange banner is overlaid on the right side of the image, containing the text 'FUTURISTIC LOCATION' in white, bold, uppercase letters.

# FUTURISTIC LOCATION

“A promising location where development, connectivity, serenity & everything will revolve around you.”







## ROBUST CONNECTIVITY & MUCH MORE AT SEC-79



### Promising Location



"Live in the neighbourhood which is positioned to be one of the most connected developments in the vicinity loaded with a plethora of upcoming public transport systems such as RRTS, ISBT, and multi-mode transportation."



## BEST OF FACILITIES IN MINUTES

### IT CENTRES & BUSINESS HUBS

#### TRANSPORT & CONNECTIVITY:

NH-8  
SPR  
GCRE  
KMP Expressway  
Gurugram ISBT  
IGI Airport

#### RECREATION:

Cricket Stadium  
Golden Greens Golf & Resorts Ltd.  
Jungle Safari & Trails

#### EDUCATION:

National Brain Research Centre  
Government Polytechnic, Manesar  
DPS, Manesar  
Amity University, Gurgaon



The background image shows a contemporary living room. On the left, a tall, modular shelving unit made of light-colored wood and black metal frames holds various items, including books and decorative objects. Some shelves are labeled 'COLOR', 'TEXTURE', and 'LIGHTING'. In the center, there are two light blue armchairs with dark wood frames. To the right, a long, low-profile sofa with light-colored cushions is positioned. A square coffee table with a light wood top and black metal frame sits in front of the sofa. A large potted plant is visible on the left side of the room. The ceiling features a large, square, recessed air conditioning unit and several small, round, recessed lights. The overall atmosphere is modern and functional.

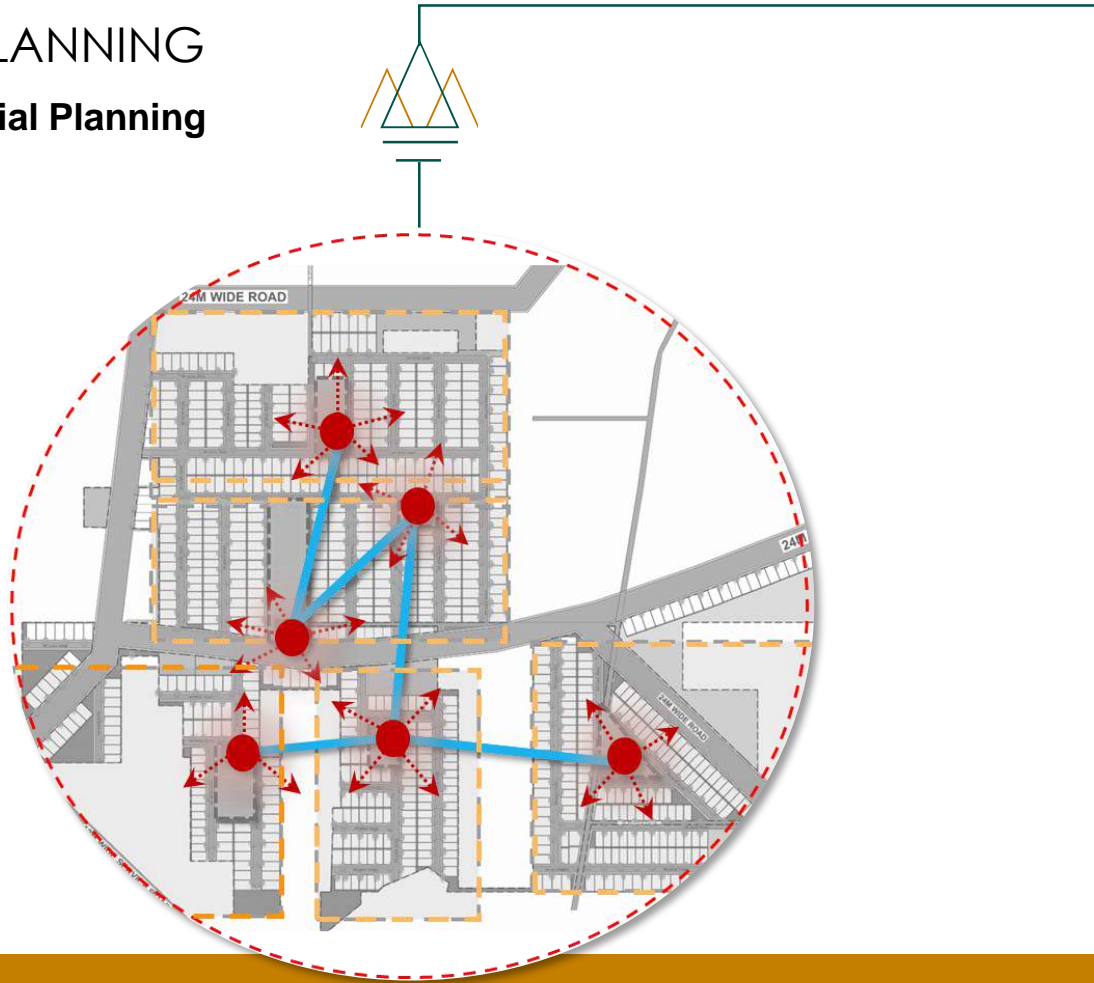
## EFFICIENT SITE PLAN

“Your Preference is our command as we provide you the well planned & functional environment for your comfortable & efficient living”



## SITE LEVEL PLANNING

### Integrated Spatial Planning



### YOUR HOME IS AT THE CENTRE OF EVERYTHING

Say goodbye to walking long distance to reach the "State of the Art Clubhouse, Kid's Play Area or other amenities". With interconnected clusters, all the pockets are made self-sufficient where all the facilities are stone's throw away.



## DECENTRALIZED PLANNING

Have all the amenities near your doorstep with **every cluster** being a **self-sufficient pocket with all facilities**



## GREENS

**Dedicated Parks** for each cluster along with **Vertical Greens** to add 10-15 % of greenery. **Greenery** is added at Parking level also



## WALKABILITY

2 min walk to **Clubs & Green Parks** within each cluster





# AMENITIES FOR ALL

“Quality of life comes when every member of the family gets to enjoy life on their own terms.”



## MULTIGENERATIONAL AMENITIES

**Special Amenities planned for every age group & every kind of you "the calm, the sporty, the social & the cheerful".**



Every pocket is equipped with a club that comes with curated amenities to cater to the needs of all age groups. Now, Community lifestyle becomes the new normal.



## Social Planning for Everyone



**Recreational  
Spaces for all ages**



**Tie up with  
Hospitality partner**



**Vehicular service to  
nearest landmark**



**Travel Safety at  
night**



**Community  
Gardens**



**Surveillance for  
Children & Seniors**



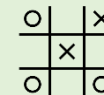
**Friendly  
Workspaces**



**Preliminary First Aid  
Assistance**



**Pet  
Friendly Parks**



**Indoor & Outdoor  
Games**



**Gadget Friendly  
Premises**



**Kids & Elder  
Centric Spaces**





# SUSTAINABLE FEATURES

“With sustainable township & energy efficient apartments, now save on bills to spend on memories with your loved ones.”



## BREATHE THE CLEAN, PURE AIR

Enjoy the constant cooling of public areas with the perfect balance of **Sunlight, Shade & Natural Ventilation**



**Mature Tree Preservation** & Plantation of 10,000 Buffer Trees in between the blocks to enable self shading through three layered plantation. This will reduce the temperature and keep the surroundings clean.



## Breathable Spaces with Enhanced Air Quality

**AQI Measuring & Display Kiosk** at multiple location within the site showing comparative data w.r.t to city AQI No.

### OXYGEN PARKS & THEME GARDENS With Air Purifying Plantation

### USE OF SUSTAINABLE TECHNIQUES

- Use of Solar Panels to reduce electricity bills
- Cool Micro-climate to reduce heat gain
- Climate Responsive Materials in facade

### WATER RETENTION STRATEGIES

- Storm Water Management
- Bio Retention Areas
- Bio Swales
- Hydrozone Planting

A woman with dark hair is lying back on a grey sofa, her eyes closed and hands behind her head, appearing to be in a state of relaxation or sleep. She is wearing a light blue t-shirt and a grey cardigan. The background is a softly lit living room with a lamp and some furniture visible. Overlaid on the entire image are several semi-transparent circles, each containing the chemical formula O<sub>2</sub>, suggesting a theme of fresh air or purity.

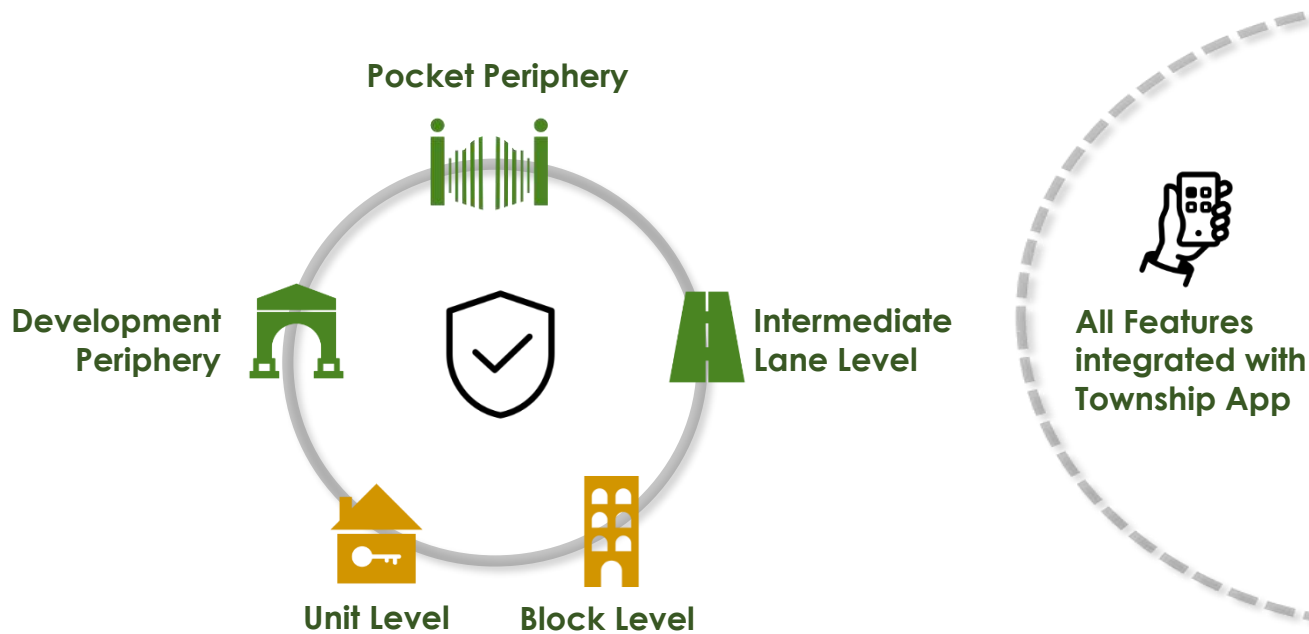
# TECH-INTEGRATED SECURITY

“Live in a serene township where safety & security comes guaranteed with use of hi-tech solutions and applications”



## SAFETY, SECURITY & AUTOMATION

**A SMART COMMUNITY** which does not compromise your security and integrates tech-driven practices at multiple levels



### MULTI-TIER SECURITY FEATURES:

  
**Access via transponders**  
to resident vehicles

  
**Smart Verification**  
for service staff & delivery agents

  
**Separate Lanes**  
for residents & visitors at entry exits

  
**Smart Card**  
to residents

### POCKET PERIPHERY SECURE PREMISES WITH SAFE PRACTICES



**Security checks at multiple level & regular Patrolling**



**Regular Training & Disaster management Drills**  
(Fire, Earthquake etc.)



**Planned Delivery & Pickup points at important junctions**

### INTERMEDIATE LANE LEVEL NO WORRY FOR YOUR FAMILY'S COMFORT & SAFETY



**Dedicated Lane Level Security**  
Checking for unauthorized parking, Security check, patrolling, assistance



**Smart Parking**  
Slot Booking ,Easy Access



**Smart Street Lighting**  
Scheduled light timings to provide right level of lighting





# OUR MASTER DEVELOPMENT





MASTER PLAN









## MASTERPLAN





■ EBONY

## MASTERPLAN







 **PALM**

## MASTERPLAN





## MASTERPLAN

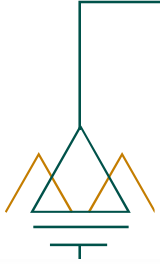




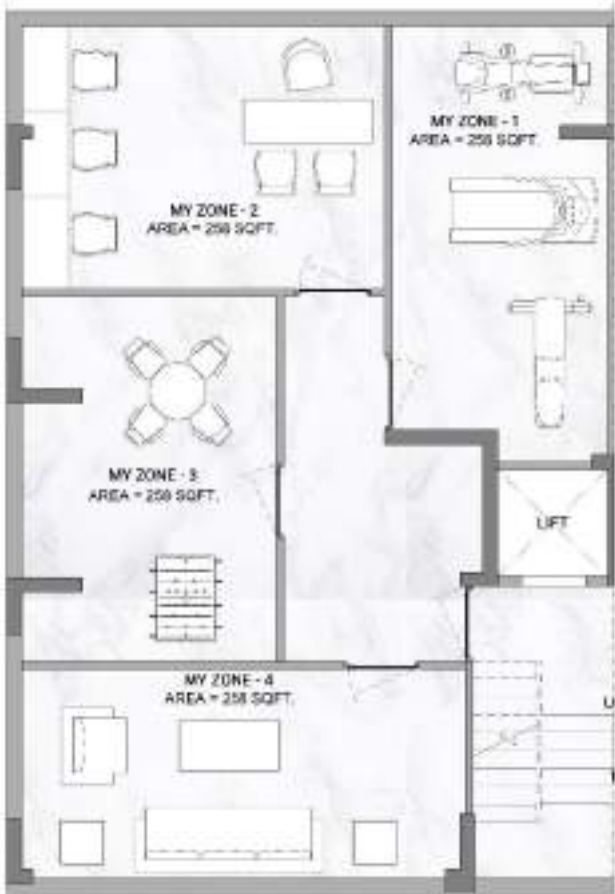


UNIT PLANS  
3.5 BHK

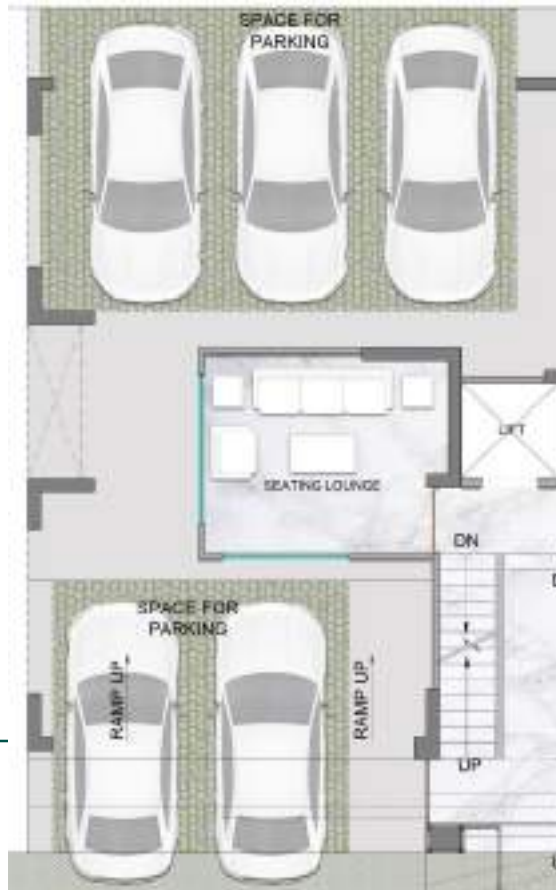




# UNIT PLAN - 3.5 BHK



MY ZONE



STILT FLOOR



TYPICAL FLOOR

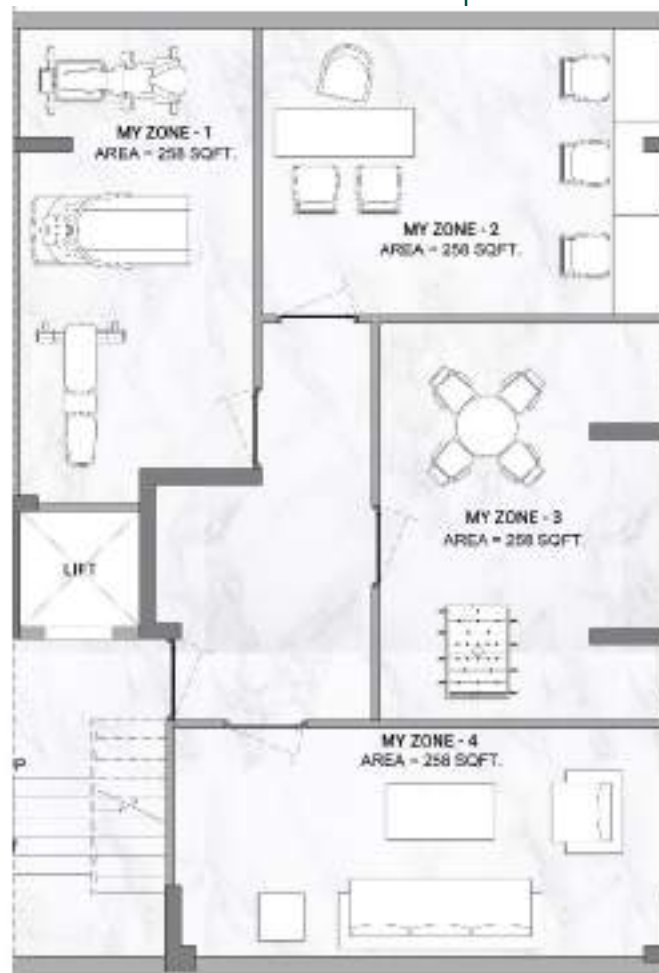
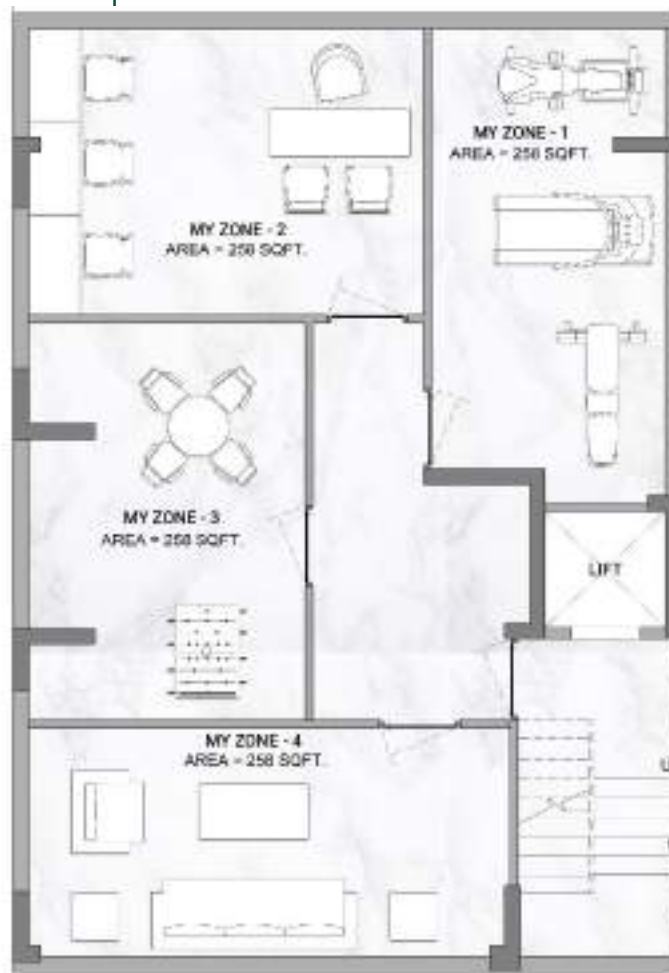


MY AER-LOUNGE





# MyZONE FLOOR PLAN



UNIT PLANS – 3.5 BHK+3T

PRIVATE SPACE + PRIVATE TERRACE

**Additional Private Space**  
on Terrace and Basement  
for each unit



PERSONAL  
SPACE



Common  
Lobby



# STILT FLOOR PLAN



UNIT PLANS– 3.5 BHK+3T

PRIVATE SPACE + PRIVATE TERRACE



Common indoor stilt space with pool table, seating lounge etc.



Access controlled lobby systems



Parking monitoring system



App for shared facility use



Dedicated lift and car parking



Driver's toilet





# TYPICAL FLOOR PLAN



UNIT PLANS – 3.5 BHK+3T

PRIVATE SPACE + PRIVATE TERRACE



Home  
Automation  
System



Private  
Basement  
Area



Study  
Area



Air  
Conditioning



Modular  
Kitchen



Attached  
Toilets



Wide  
Balcony











Natural  
Light

# My AER-LOUNGE FLOOR PLAN



UNIT PLANS – 3.5 BHK+3T

PRIVATE SPACE + PRIVATE TERRACE

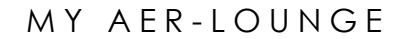
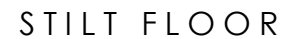
- |   |   |
|---|---|
|  Barbeque Area     |  Open Gym                |
|  Common Area       |  Jogging Area            |
|  Meditation area |  Basketball Court      |
|  Garden Space    |  Private Terrace Space |





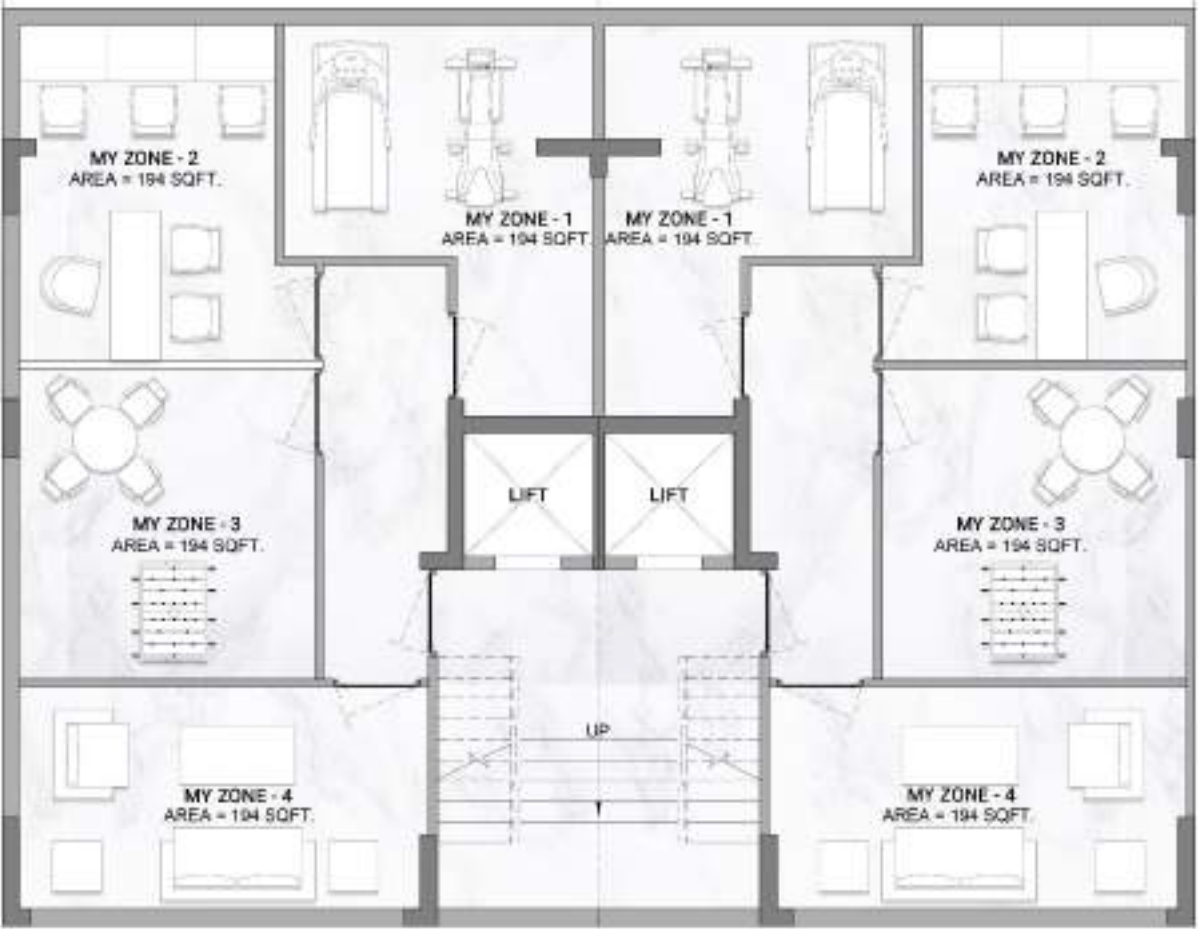
UNIT PLANS  
2.5 BHK







MY ZONE FLOOR PLAN



STILT FLOOR PLAN



TYPICAL FLOOR PLAN



MY AER LOUNGE





THANK YOU

---

CONTACT YOUR RM TO KNOW MORE